

Project Title: Finding Multiplication Facts with a Digital Camera

Main tool: Excel

Integrated tools: Digital Camera

Grade: 3	Content Area: Math	Topic: Multiplication	TEKS: Math 3.4 A-B, 3.6 A-B, 3.7 A-B	TA TEKS: : 1 A-E, 2 A-E, 3 A-B, 4 A-B, 5 A, 7 B, 10 A-C, 11 A
----------	-----------------------	--------------------------	--	---


Higher Level Thinking Skills: Knowledge, Comprehension, Application, Analysis, Synthesis, and Evaluation

Procedures:

1. Students work in small groups or pairs and use a digital camera to take pictures of examples of multiplication problems in real-life situations around the classroom, school, and/or playground. (See Example File; i.e. a spider may represent the problem $4 \times 2 = 8$.)
2. Students use Excel to create a multiplication table of all of the facts in that family and highlight the fact that is represented by the photo. (See more detailed directions in the File link below.)
3. Students insert the photo into the Excel spreadsheet.
4. Students insert a text box and type about their photo and the fact it represents.
5. Students format the table (increase font size, change font, add borders) and Print.
6. Students share their creations and evaluate the group effort and answers to multiplication facts.

Numeracy in Excel is just as the term applies. Crunching numbers with Excel's tools can give learners practice and drill with many numeracy operations. Students can look all around them and see math. Math is everywhere. Using a digital camera, students take pictures of images around the school that display multiplication. They then insert their image into Excel and type in their multiplication facts. The picturing math activity was extended using a text box to write about their multiplication picture. Kathy Adkins Forsyth County Schools

Real Life Multiplication



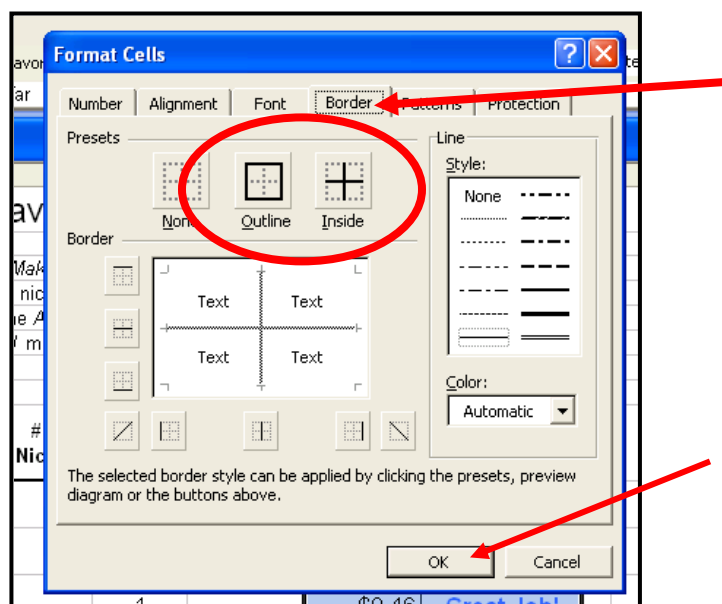
x	6
0	0
1	6
2	12
3	18
4	24
5	30
6	36
7	42
8	48
9	54
10	60
11	66
12	72

Multiplication is everywhere. I took a picture of plaques on a wall. The plaques show $6 \times 3 = 18$. If you do this you will think it is fun.

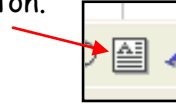
Lyna
2/4/99

Mrs. Pilon's Class
February 1999

- To **insert the digital camera picture** in Excel, students click on Insert menu and then Picture, and From File. Locate the picture from the Shared drive on the network (if the teacher copied all photos to the Shared drive).
- To **add the border** around the multiplication facts table, students click and drag to highlight the cells in the multiplication table. Then, students click on Format and then Cell. Click on the Border tab and choose both Inside and Outside border buttons. Click OK. (See figure below.)



- To **add a text box**, students click on the View menu and then click on Drawing, (to add the Draw toolbar to the bottom of the window.) Then, from the Draw Toolbar, click on the Text Box button.



Click and drag where you want your text box to be. (Or just click and when you type, the box will expand to fit the text.)

- To **fill the cells** (for the multiplication fact that the photo represents) **with a color**; click on the cell(s) to highlight, then click the arrow to the right of the Paint Can button on the Draw Toolbar. (Or the Paint Can button on the Format toolbar.) Click the color of your choice.

Paint Can button

